



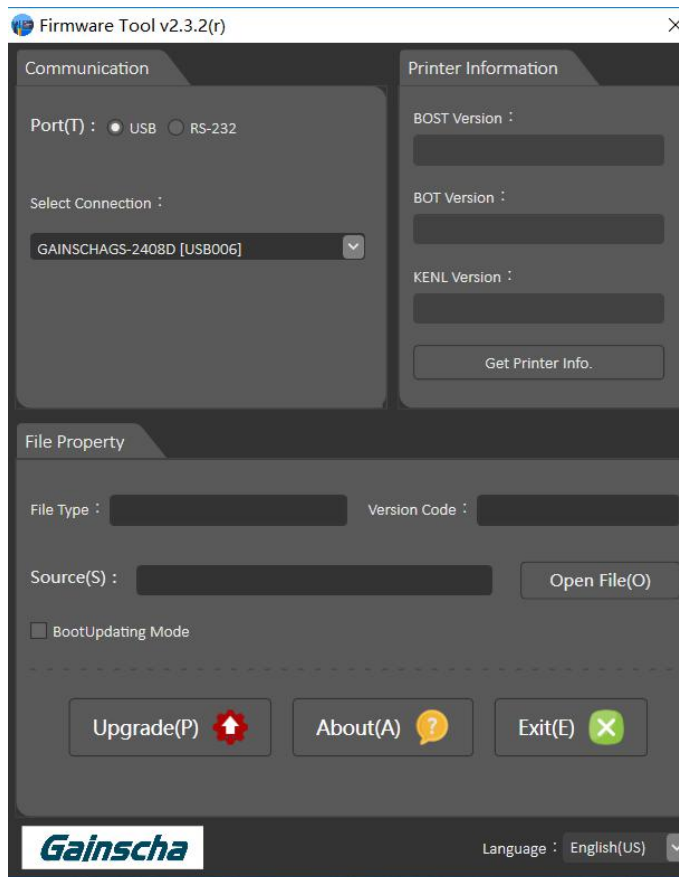
Program upgrade steps

操作说明

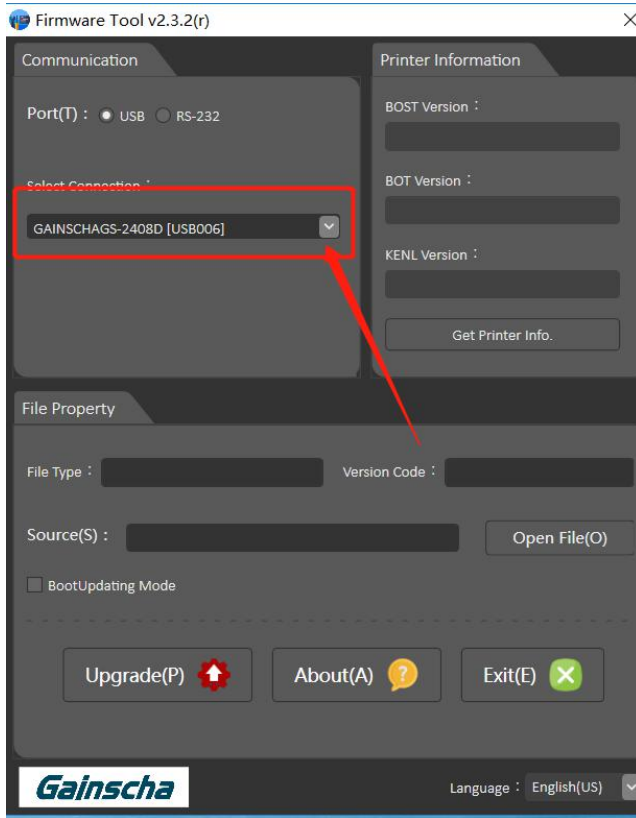
User Guide

By Allen, January 17,2022

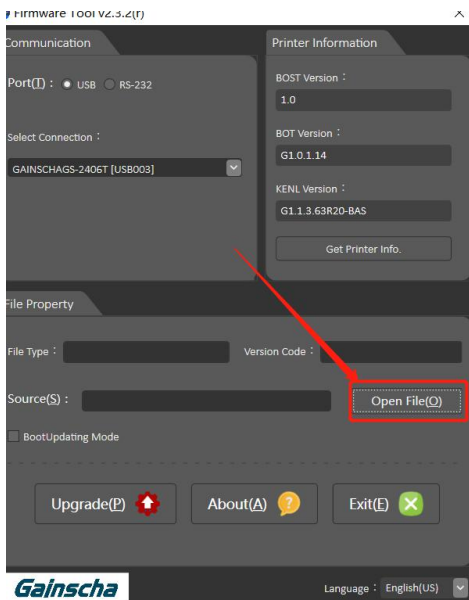
- 1.The printer connects to the computer through the USB interface.
- 2.Power on the printer
- 3.Open the upgrade tool



- 4.Check if the printer is connected to the computer(**Model GS-2408D**)



5. Click on Open File (O) as shown below:

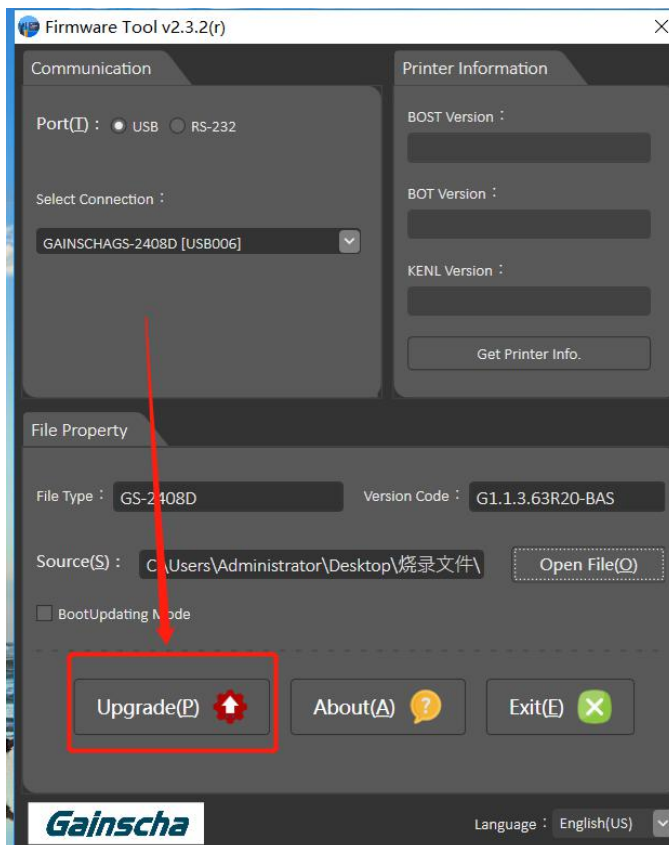


6. Select the corresponding model and version to upgrade.

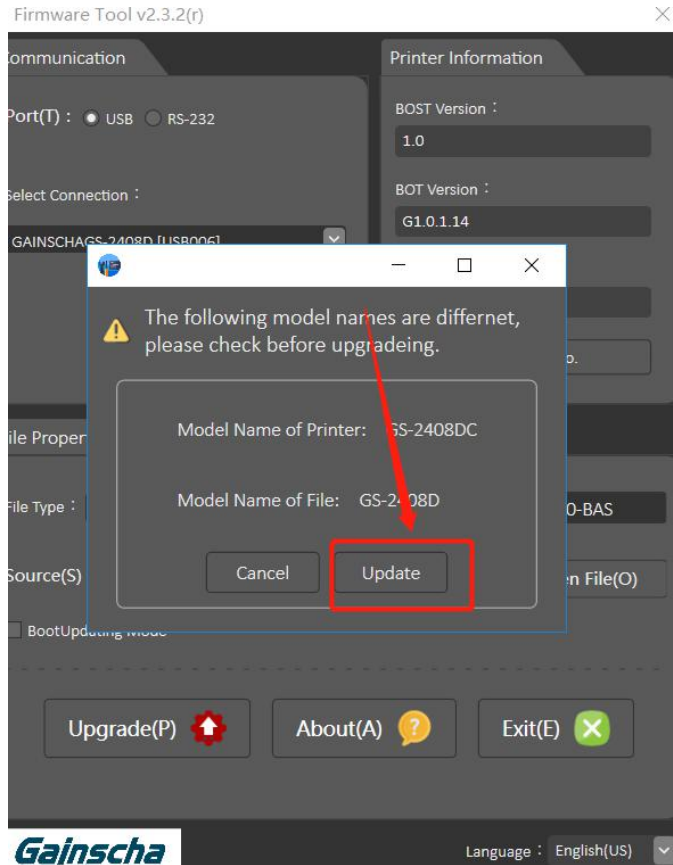
名称	修改日期	类型	大小
GS-2206T_G1.1.3.63R20-BAS	2021/10/1 13:30	GDAC 文件	2,092 KB
GS-2208D_G1.1.3.63R20-BAS	2021/10/1 13:31	GDAC 文件	2,094 KB
GS-2406T_G1.1.3.63R20-BAS_211012	2021/10/12 10:19	GDAC 文件	2,100 KB
GS-2406T_PLUS_Std_G1.1.3.63R20-B...	2021/10/1 13:28	GDAC 文件	2,101 KB
GS-2408D_G1.1.3.63R20-BAS	2021/9/16 15:32	GDAC 文件	2,104 KB
GS-3405T_G1.1.3.63R20-BAS_211012	2021/10/12 10:20	GDAC 文件	2,099 KB
GS-3405T_PLUS_Std_G1.1.3.63R20-B...	2021/10/1 13:33	GDAC 文件	2,099 KB

(Figure 4)

7. Click on the Upgrade (P).



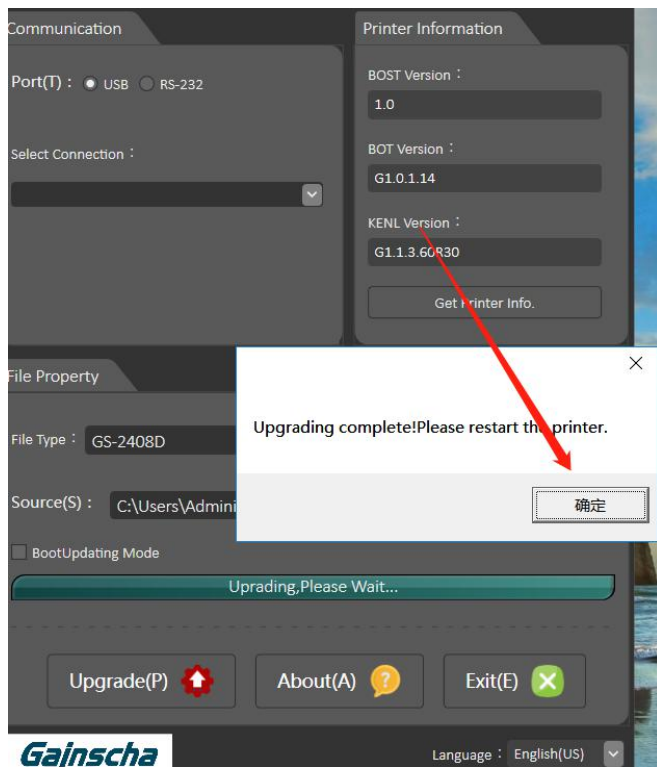
8. Click on Update to upgrade the printer program.



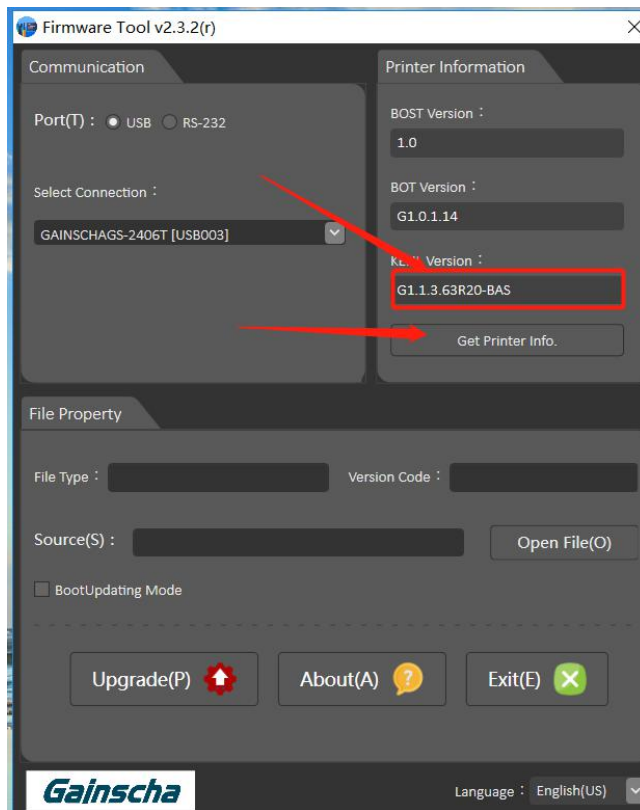
Note: 1. It is normal for the printer indicators to flash constantly during the upgrade.

2. After the upgrade, the printer will sound. The above situation shows that the printer program has been completed the upgrade.

9. Click OK.



10. Get the printer information.



Note: See whether the printer program version at the picture frame is consistent with the previous versions, please refer to Figure IV.

11.Complete the printer program upgrade.