

Gainscha Auto ID Co., Ltd.

珠海柏印自动化设备有限公司

Focus on computer Internet terminal equipment industry for more than 20 years
Thermal Printer Industry Leader

 www.gainscha-aidc.com



HAHA

Gainscha 佳博
珠海佳博科技有限公司

01 ▶ **Company Overview**

Innovating for Your Success

02 ▶ **Complete Printer Solutions**

Product Range Overview

03 ▶ **Industrial Barcode Printer**

Reliability in Industrial Printing

04 ▶ **Desktop Barcode Printer**

Simplifying Your Workflow

05 ▶ **Thermal Receipt Printer**

Efficiency at Your Counter

06 ▶ **Thermal Mobile Printer**

Unleash Print Mobility



CONTENTS



Gainscha 佳博

珠海佳博科技有限公司

01

Company Overview

Innovating for Your Success



About us

Reliable and Innovative Barcode Ticket Printer Manufacturer

GAINSCHA is a top producer of Barcode and POS Printers, offering a full range of products for various industries including retail and manufacturing.

Our integrated platform streamlines design, development, production, sales, and services, ensuring we offer top-tier value to our clients.

Our dedication to innovation is reflected in our extensive patent portfolio in thermal printing, underscoring our commitment to independent research and development.

GAINSCHA actively seeks global partnerships, leveraging our strong export network across Europe, the Americas, Africa, and Asia to become your reliable manufacturing partner.



140 ⁺
Countries and regions



1999 Year
Established

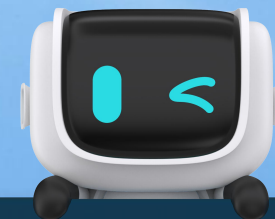


60 Million
Annual operating income



1500 ⁺
Employees worldwide

History



Gainscha is dedicated to enhancing the quality of customer service and refining our current products. We are also expanding our development into new products and areas, aiming to lead the industry globally.

We focus on building a professional team, creating top-notch products, and offering exceptional services. We provide our staff with ample opportunities for growth and development, backed by strategic planning.

1999

Gainscha was born in October, the golden month of fall.

2000

Gainscha launched its first self-developed ticket printer, entering the market.

2021

Gainscha became the first brand of micro-printing independent innovation in China.

Technical Patent Certificates



97 + items Patent technology

- Design Patent
- Utility Model Patent
- Invention Patent

Company Capabilities

20+ production lines

- 40,000+ m² production base, 600+ employees, 30+ professionals in our R&D team



Software & Utility

Label Designer

Industry software
Uprinter App / BarTender

Windows Driver

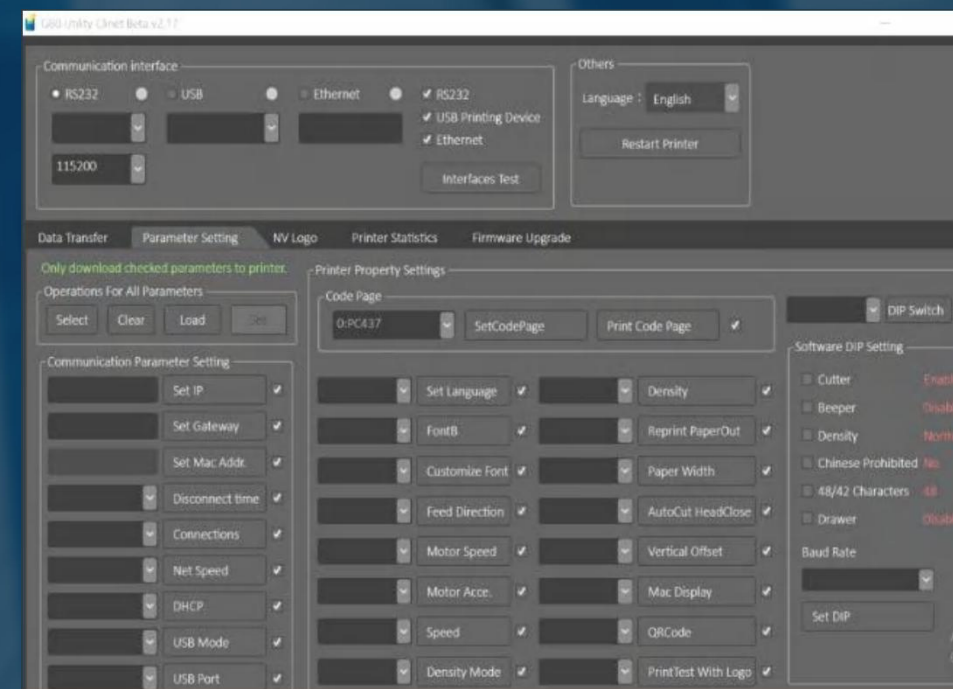
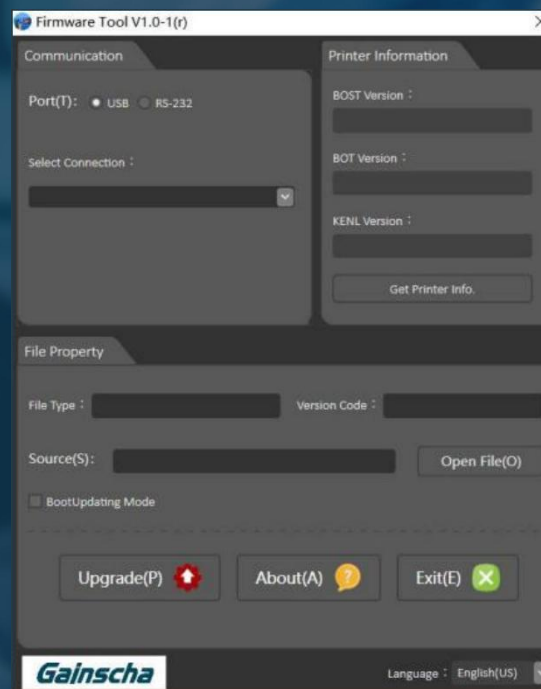
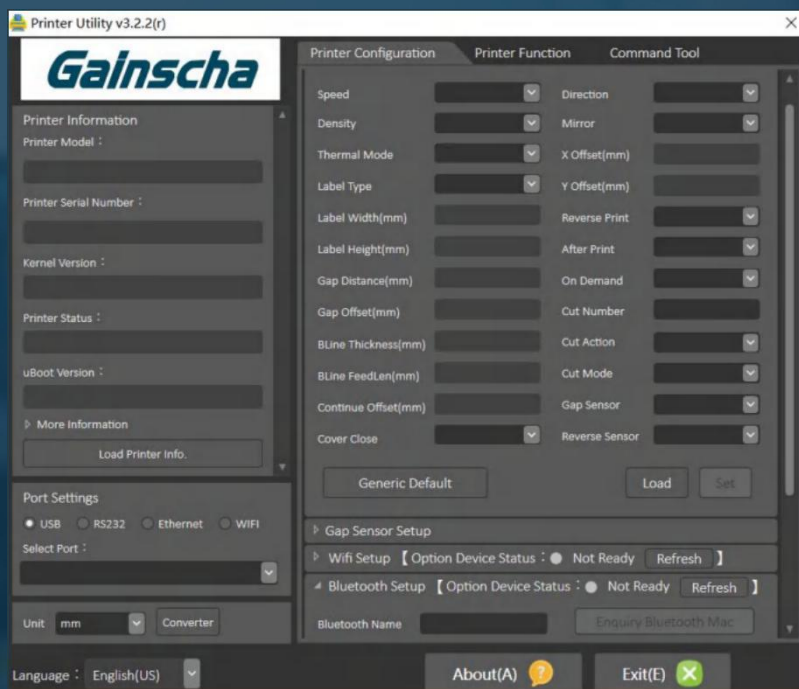
Windows Driver
Android SDK

Utility & Manual

Windows/Android utility
User manual / Quick guide

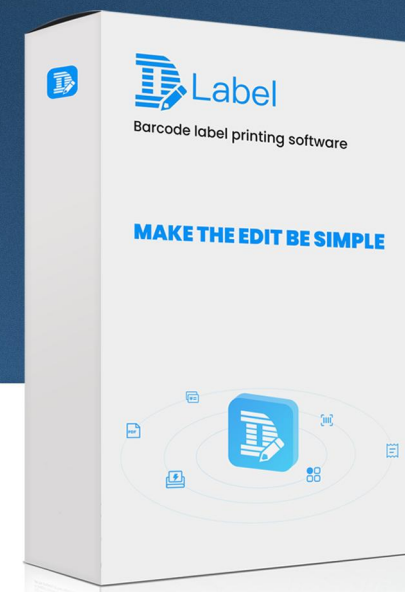
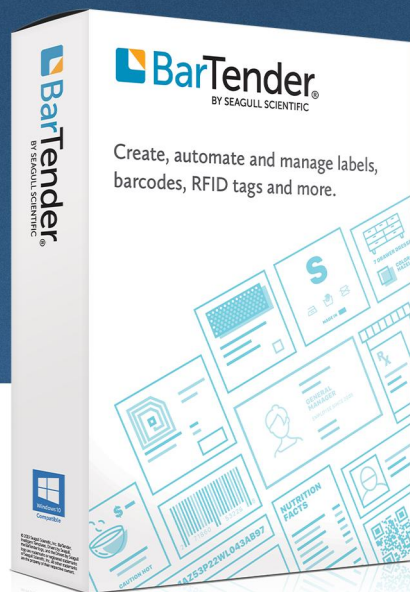
Firmware Upgrade Utility

Firmware maintainable



Label Design Software

For GE/GA/GS/GX/GI-xxxx Series Barcode Printers



Professional After-Sales Service

- **Service Commitment**

Round-the-Clock Technical Support

- **Innovative Custom Solutions**

Crafting Solutions to Fit Your Needs

- **Service Advantages**

Seasoned Technical Team

- **Continuous Improvement Focus**

Constantly Evolving for Better Service

02

Complete Printer Solutions

Innovating for Your Success

Ideal Choice for Multiple Industries and Scenarios



Manufacturing



Warehouse
Management



Logistics



Retail Store
Management



Medical Industry

Product Portfolio

Industrial Barcode Printer



Desktop Barcode Printer



Thermal Receipt Printer



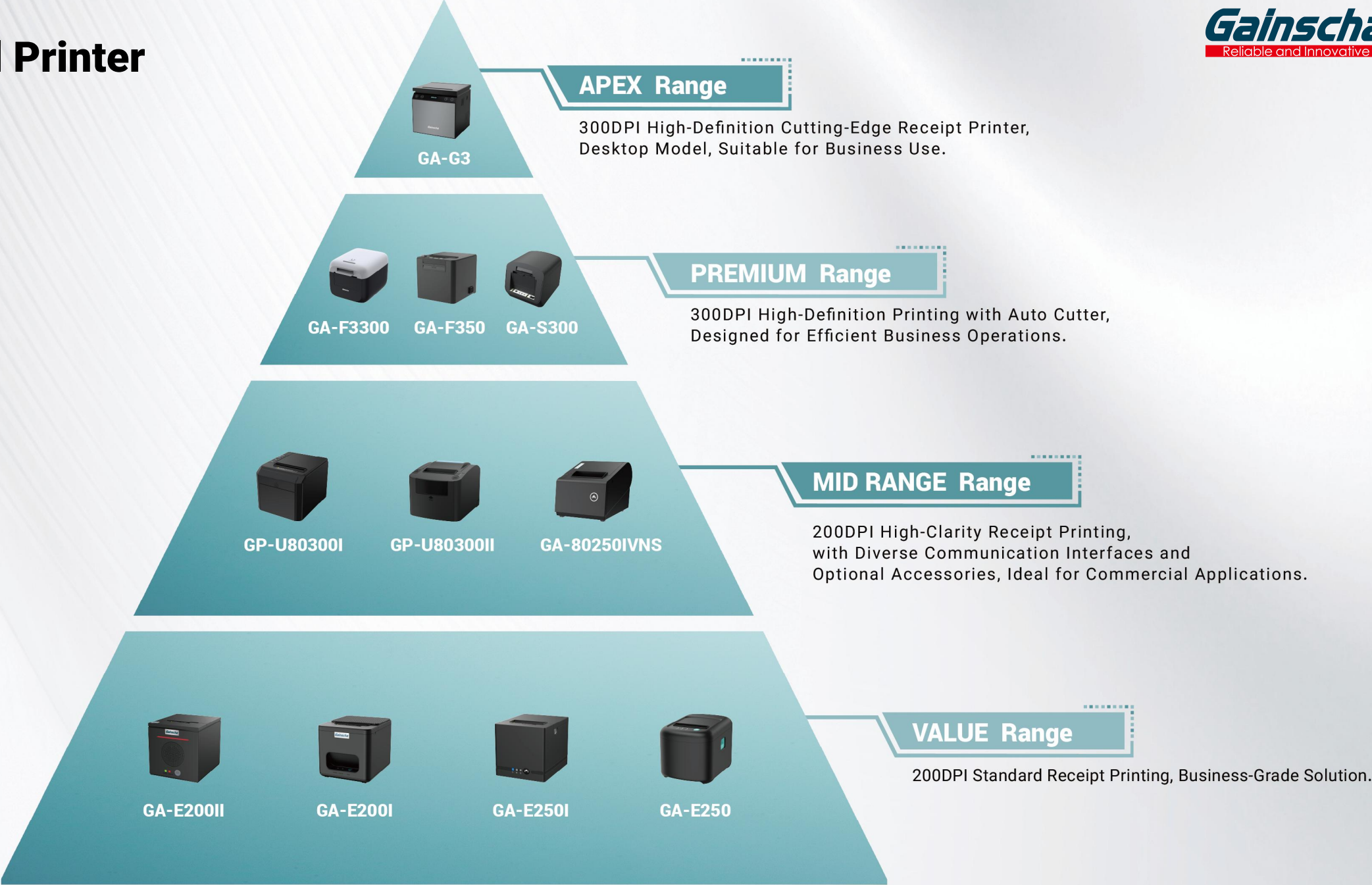
Thermal Mobile Printer



Barcode Printer



Thermal Printer



03

Industrial Barcode Printer

4 inch industrial printer, work with 450m ribbon and industrial-grade larger print media. Compatible with various printing languages and software for easy system integration. Equipped with high-quality touch screen, bringing users a smart, intuitive and convenient operation experience.



GI-2408T PLUS (Empower)

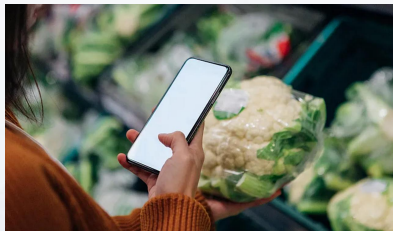
4 inch Industrial Label Printer

Key Features

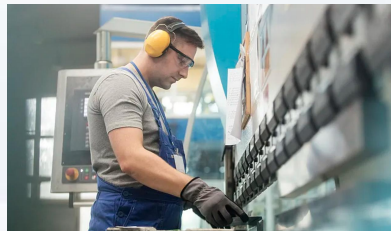
- > Resolutions - 203dpi / 300dpi
- > Preinstalled multiple printing emulations for easy integration
- > Easy to load print media and ribbon, auto calibrate the print media
- > Rugged and reliable construction, ideal for high volume label printing
- > High-quality touch screens offer a smart, intuitive, and convenient experience



Automotive Manufacturing



Food Traceability



Mechanical Processing

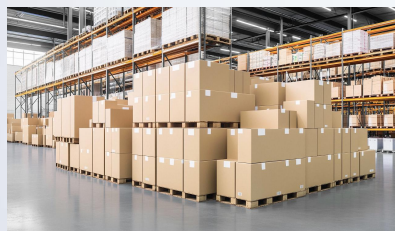


GI-2408T PLUS (Standard)

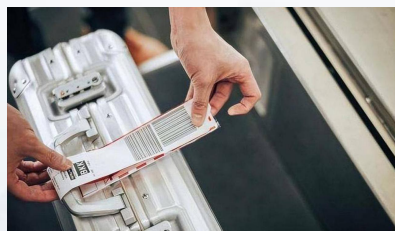
4 inch Industrial Label Printer

Key Features

- > Resolutions - 203dpi / 300dpi
- > Printing speed - 203mm/s(8"/s)
- > Printing width - Max. 104mm(4.1")
- > Interfaces - USB + USB Host + LAN + Serial
- > Options - Bluetooth or Wi-Fi
- > Pre-installed TSPL, ZPL, ZPL II, DPL, EPL printer emulation



Large-scale warehouse



Luggage tag



Motor Assembly



GI-2408T (Empower)

4 inch Industrial Label Printer

Key Features

- > Resolutions - 203dpi / 300dpi
- > Printing width - Max. 104mm(4.1")
- > Internally scalable true type font engine
- > Pre-installed TSPL, ZPL, ZPL II, DPL, EPL printer emulation
- > Bartender® Free Windows drivers and label design software
- > Provide Windows printer utility, Windows SDK and Android SDK



Mold Making



Furniture Manufacturing



Pharmaceutical Packaging



GI-2408T (Standard)

4 inch Industrial Label Printer

Key Features

- > Resolutions - 203dpi / 300dpi
- > Printing speed - 203mm/s(8"/s) Max.
- > Printing width - Max. 104mm(4.1")
- > Interfaces - USB + USB Host + LAN + Serial
- > Options - Bluetooth or Wi-Fi
- > Pre-installed TSPL, ZPL, ZPL II, DPL, EPL printer emulation
- > Cutter for label and textile, Peeler is option



Logistics sorting center



Manufacturing



Warehouse Management



GI-2408T Series

4 inch Industrial Label Printer

Gainscha
Reliable and Innovative



Model

Resolution
Print Method
Print Speed 203DPI
Memory SDRAM
Memory FLASH
Interface USB
Interface USB Host
Interface RS232
Interface Ethernet
Interface WiFi
Interface Bluetooth
Interface GPIO
Optional

GI-2408T

203/300DPI
TT/DT
8IPS
128MB
128MB
✓
✓
✓
✓
Option
Option
/
Cutter, peeler

GI-2408T PLUS

203/300DPI
TT/DT
8IPS
128MB
128MB
✓
✓
✓
✓
Option
Option
Option
Cutter, peeler

ZT210

203/300DPI
TT/DT
6IPS
128MB
128MB
✓
/
✓
Option
/
/
✓
Cutter, peeler

ZT410

203/300DPI
TT/DT
14IPS
256MB
512MB
✓
✓
✓
✓
Option
Option
/
Cutter, peeler, Rewind

ZT411

203/300/600DPI
TT/DT
14IPS
256MB
512MB
✓
✓
✓
✓
✓
Option
Option
Cutter, peeler, Rewind, RFID

PM42

203/300 DPI
TT/DT
4-12IPS
128MB
128MB
✓
✓
✓
✓
/
/
/
/

MA2400P

203/300DPI
TT/DT
6IPS
64MB
128MB
✓
✓
✓
✓
Option
Option
/
/



04

Desktop Barcode Printer

The powerful desktop printer, direct thermal and thermal transfer. Widely used in industries such as manufacturing, retail, and logistics where barcodes are used to track products and inventory. Option UHF RFID labels.



GA-2408T

4 inch Flagship Desktop Label Printer

Key Features

- > Resolutions - 203dpi / 300dpi
- > Printing speed - 203mm/s(8"/s) max.
- > Printing width - Max. 104mm(4.1")
- > Interfaces - USB + USB Host + LAN + Serial
- > Pre-installed TSPL, ZPL, ZPL II, EPL, DPL printer emulation
- > Customer option - Cutter, Peeler, Linerless, RFID, Bluetooth, WiFi



Scan & Print Directly



Peeling off with tablet



Offline Printing with scale



GA-2408T

4 inch Flagship Desktop Label Printer

Gainscha
Reliable and Innovative



Model

Resolution

Print Method

Print Speed 203DPI

Print Speed 300DPI

Memory SDRAM

Memory FLASH

Interface USB

Interface USB Host

Interface Rs232

Interface Ethernet

Interface WiFi

Interface Bluetooth

Ribbon

Optional



GA-2408T GA-3406T

203/300DPI

TT/DT

8IPS

6IPS

128MB

128MB

✓

✓

✓

✓

Option

Option

300M

Cutter, Peeler, RFID,
Linerless



ZD500

203/300DPI

TT/DT

6IPS

4IPS

128MB

256MB

✓

/

✓

✓

Option

Option

74M

Cutter, Peeler, RFID,
Linerless



ZD420T

203/300DPI

TT/DT

6IPS

4IPS

256MB

512MB

✓

✓

Option

Option

Option

Option

300/74M

Cutter, Peeler



TX200/TX300/TX600

203/300/600DPI

TT/DT

8IPS

6IPS

128MB

128MB

✓

✓

✓

✓

Option

Option

300M

Cutter, Peeler



PC43T

203/300DPI

TT/DT

8IPS

6IPS

128MB

128MB

✓

✓

Option

Option

Option

Option

300/74M

RFID



RT700iW/RT730iW

203/300DPI

TT/DT

7IPS

5IPS

32MB

128MB

✓

✓

✓

✓

/

Option

300M

Cutter, Peeler

GS-2406T PLUS

4 inch Eco Desktop Label Printer

Key Features

- > Resolutions - 203dpi / 300dpi
- > Printing speed - 152mm/s(6"/s) Max.
- > Printing width - Max. 104mm(4.1")
- > Interfaces - USB + USB Host + LAN + Serial
- > Customer option - Cutter, Peeler, Bluetooth, WiFi



Assets Management



Jewelry label



Flower shop satin



GS-2406T

4 inch Eco Desktop Label Printer

Key Features

- > Resolutions - 203dpi / 300dpi
- > Printing speed - 152mm/s(6"/s) max.
- > Printing width - Max. 104mm(4.1")
- > Interfaces - USB + USB Host
- > Options - Bluetooth or Wi-Fi
- > Customer option - Textile Cutter, Label Cutter, Bluetooth, WiFi



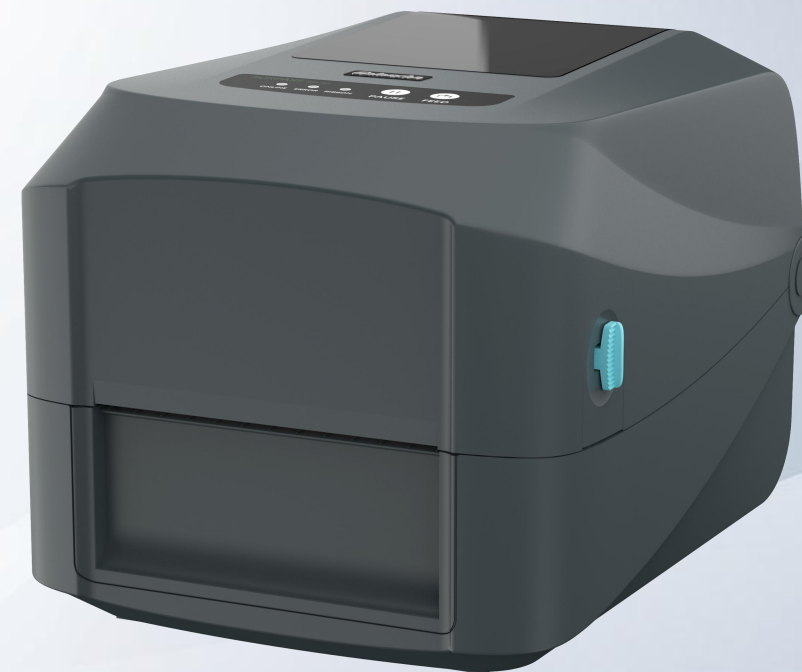
Textile/Satin
Printing and Cutting



Fruit Sorting Center



Offline Printing with scanner



GS-2406T Series

4 inch Eco Desktop Label Printer

Gainscha
Reliable and Innovative



Model

Resolution
Print Method
Print Speed 203DPI
Print Speed 300DPI
Memory SDRAM
Memory FLASH
Interface USB
Interface USB Host
Interface RS232
Interface Ethernet
Interface WiFi
Interface Bluetooth
Ribbon
Optional



GS-2406T Plus GS-3405T Plus

203/300DPI
TT/DT
6IPS
5IPS
64MB
32MB
✓
✓
✓
✓
Option
Option
300M
Cutter, peeler



GS-2406T GS-3405T

203/300DPI
TT/DT
6IPS
5IPS
64MB
32MB
✓
✓
Option
Option
Option
Option
300M
Cutter



GX420

203/300DPI
TT/DT
6IPS
4IPS
8MB
4MB
✓
/
✓
Option
Option
Option
74M
Cutter, peeler, RFID



ZD888

203DPI
TT/DT
6IPS
/
128MB
256MB
✓
/
/
Option
Option
✓
300M
Cutter, peeler



TTP-247

203/300DPI
TT/DT
7IPS
6IPS
8MB
4MB
✓
/
✓
Option
/
Option
300M
Cutter, peeler



PC42T

203DPI
TT/DT
4IPS
/
16MB
8MB
✓
✓
Option
Option
/
/
300M
Cutter, peeler



DT200/DT230

203/300DPI
TT/DT
5IPS
4IPS
16MB
8MB
✓
/
/
/
/
/
300M
Cutter, peeler

GS-2408D

4 inch Direct Thermal Label Printer

Key Features

- > Resolution - 203dpi
- > Speed - 203mm/s(8"/s) max.
- > Printing width - Max. 104mm(4.1")
- > Interfaces - Only USB or USB + LAN + USB Host
- > Memory - 64MB SRAM, 32MB FLASH



E-commerce waybill



Retails



Logistic



GS-2208D

2 inch Label & Wristband Printer

Key Features

- > Resolution - 203dpi
- > Speed - 203mm/s(8"/s) Max.
- > Designed for healthcare and retails
- > Interfaces - USB + LAN + USB Host
- > Memory - 64MB SDRAM, 32MB FLASH
- > Pre-installed TSPL, ZPL, ZPL II, DPL, EPL printer emulation



Healthcare - Patient Wristband
Test tube label



Retails - Bakery labels, drinks
label
KFC project



Other normal 2inch label





Model

Resolution

Print Method

Print Speed 203DPI

Print Speed 300DPI

Memory FLASH

Interface USB

Interface USB Host

Interface Ethernet

Interface WiFi

Interface Bluetooth



GS-2208D

203DPI

DT

8IPS

64MB

32MB

✓

✓

✓

Option

Option



ZD410

203/300DPI

DT

6IPS

256MB

512MB

✓

✓

Option

Option

Option



TDP-225

203/300DPI

DT

6IPS

8MB

4MB

✓

✓

✓

Option

Option



WS2

203/300DPI

DT

7IPS

32MB

16MB

✓

✓

✓

/

/



DT200/DT230

203/300DPI

DT

7IPS

32MB

128MB

✓

✓

✓

Option

Option

GE-2406T

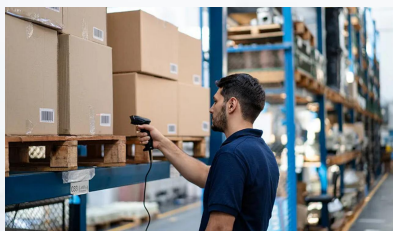
4 inch Eco Desktop Label Printer

Key Features

- > Compact footprint, classic industrial gray color, meet the space required
- > Support thermal transfer and direct thermal printing technology
- > 6IPS high-speed printing, work with 20~118mm print media, 110m ribbon capacity
- > Interfaces - Serial + USB + Ethernet + USB Host
- > Options - Bluetooth or Wi-Fi
- > Pre-installed TSPL, ZPL, ZPL II, EPL, DPL printer emulation
- > Free edition Bartender label editing software



Food processing



Inventory management



Transportation



GE-2408D

4 inch Direct Thermal Label Printer

Key Features

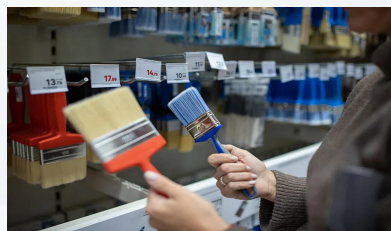
- > Resolution - 203dpi
- > Speed - 203mm/s(8"/s) Max.
- > Printing width - Max. 104mm(4.1")
- > Interfaces - USB + Bluetooth + WiFi
- > Memory - 8MB SRAM, 16MB FLASH



Special version
Dual-color printing



Pharmacy



Chain stores, Grocery



05

Thermal Receipt Printer

Compact design with save spaces like small kitchens or retail counters, offering high-speed printing and clear output, with a durable print head that reduces maintenance costs. Users can freely choose an LCD display、 top or front paper accommodating various spaces and environments.



GA-G2 / GA-G3

80MM High-end Receipt Printer

Key Features

- > Resolutions - 203dpi (GA-G2); 300dpi (GA-G3)
- > Printing speed - 300mm/s Max.
- > Printing width - 72mm Max.
- > Interfaces - USB + LAN + Serial
- > Options - Bluetooth or Wi-Fi



POS solution with scanner



Electronic opening



FLEXIBLY INSTALL



GA-E200II

80MM Thermal Receipt Printer

Key Features

- > Resolution - 203dpi
- > Printing speed - 203mm/s(8"/S) Max.
- > Printing width - 72mm Max.
- > Interfaces - USB + LAN + Serial
- > Options - Bluetooth or Wi-Fi
- > Memory - 8MB SRAM, 16MB FLASH



Dual-Reminder Alert



Desktop / Wall-Mount



Automatic Paper Cutter

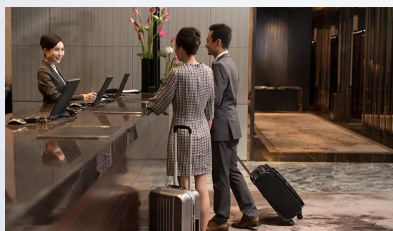


GA-E200I

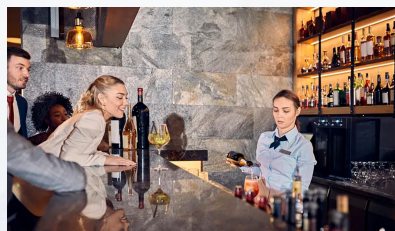
80MM Thermal Receipt Printer

Key Features

- > Printing speed - 200mm/sec
- > Printing width - 72mm Max.
- > Interfaces - USB only or USB+LAN
- > Options - Bluetooth or Wi-Fi
- > Available wall-mounted installation
- > Cutter life 1.5M cuts, PH life 150km



Hotel Check-in



Bar, Coffe and other store



Lottery tickets

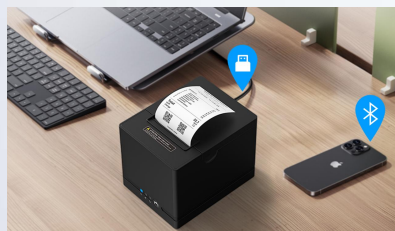


GA-E250I

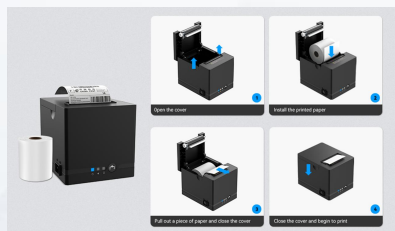
80MM Thermal Receipt Printer

Key Features

- > Printing speed - 250mm/s
- > Printing width - 72mm Max.
- > Interfaces - USB + LAN + Serial
- > Options - Bluetooth or Wi-Fi
- > 4pcs in one box



Flexible connection



Easy installation



Chain clothing store

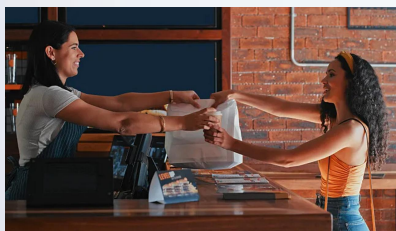


GA-E250

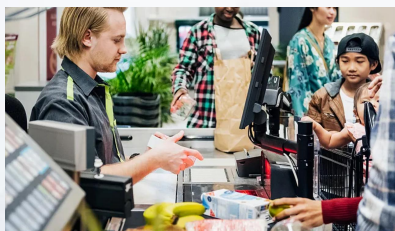
80MM Thermal Receipt Printer

Key Features

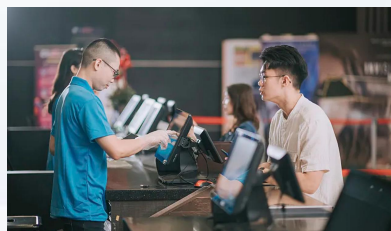
- > Printing speed - Max. 250mm/sec
- > Printing width - 72mm Max.
- > Interfaces - USB + LAN + Serial
- > Options - Bluetooth or Wi-Fi
- > 8pcs in one box



Fast food chain store
KFC project



Supermarket
Cashier Desk



Movie theater



GA-U80300II

80MM Thermal Receipt Printer

Key Features

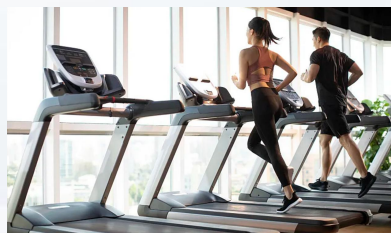
- > Printing speed - 300mm/sec
- > Printing width - 72mm Max.
- > Interfaces - USB + LAN + Serial
- > Options - Bluetooth or Wi-Fi
- > Available wall-mounted installation
- > 4pcs in one box



Parking Lots



Post Offices



Gym





06

Thermal Mobile Printer

Easy to carry: Compact and portable, supporting receipt and label dual-printing capabilities; suitable for mobile scenarios in retail, transportation, manufacturing, traffic enforcement, and more.





B300 | B310 | B380

3 Inch Mobile Label & Receipt Printer

Key Features

- > Max. 120mm/s Print Speed
- > 203 DPI High-Definition Printing Resolution
- > Supports Printing Receipts and Labels
- > B300 as standard version; B380 as dual-color version
- > B380 works with dual-color thermal paper, including Black+ Red, Black+Orange, Black+Blue etc



Retail



Manufacturing



Traffic Enforcement

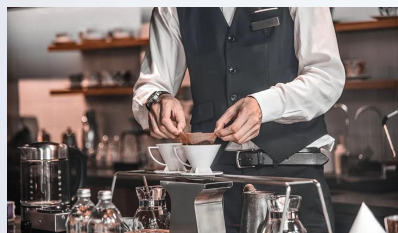


GP-M421

4 Inch Mobile Label & Receipt Printer

Key Features

- > Max. 50mm/s Print Speed
- > Built-in LCD display for settings
- > Adjustable printer roll slot for 25mm-112mm labels printed
- > Compatible with ESC/POS, TSPL, CPCL printer emulation
- > Android & iOS version Gprinter app available, edit and print your labels



Coffee Shop



Logistics



Express service

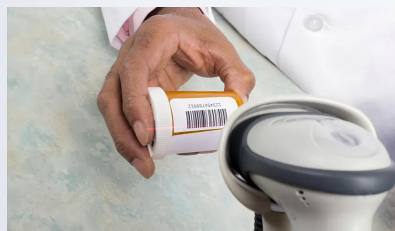


GP-M324

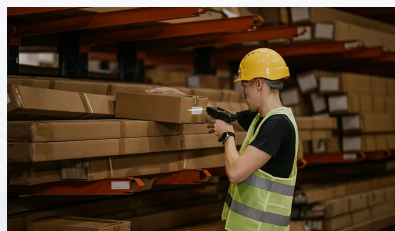
3 Inch Mobile Label Printer

Key Features

- > Max. 60mm/s Print Speed
- > Supports Printing Waybills and Labels
- > Three buttons + OLED screen for quick setup
- > Offers Type-C and Bluetooth for Quick Pairing
- > Optional belt clip and strap for hands-free carrying
- > Rated IP42 for water and dust resistance, withstands 1.2m drop tests



Healthcare



Warehouse Management



Change price tag

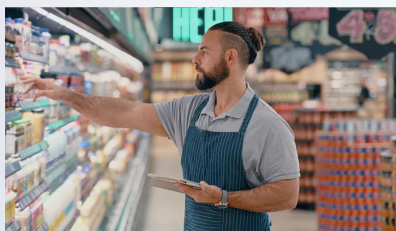


GP-M323

3 Inch Mobile Label & Receipt Printer

Key Features

- > Max. 100mm/s Print Speed
- > 203 DPI High-Definition Printing Resolution
- > Built-in LCD display for settings
- > Optional belt clip and strap for hands-free carrying
- > Rated IP54 for water and dust resistance, withstands 1.5m drop tests



Supermarket



Hotel Front Desk



Pet Clinic

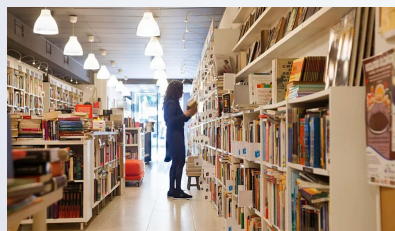


GP-M322

3 Inch Mobile Label & Receipt Printer

Key Features

- > Max. 70mm/s Print Speed
- > Easy connection via Bluetooth
- > Built-in display for convenient operation, user friendly
- > Work with thermal receipts, 25mm~80mm thermal labels, shipping label printing
- > Support Windows, Android, iOS tablet / PDA / mobile phone connection



Bookstore



Restaurant Orders



Shopping Mall

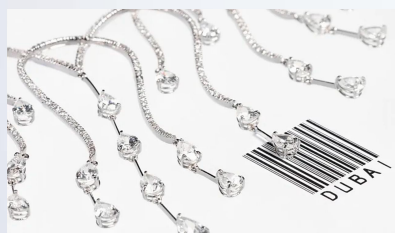


GP-M220

2 Inch Mobile Label Printer

Key Features

- > Max. 50mm/s Print Speed
- > Easy Bluetooth connection
- > 1500mAh large battery for ultra-long endurance
- > Compatible with ESC/POS, TSPL, CPCL printer emulation
- > Android & iOS version Gprinter app available, edit and print your labels



Jewelry label



Post Offices



Office



Thank you for browsing

Feel free to reach out to us for expert and dependable printer solutions tailored to your needs.

Reliable and Innovative